



Victory Plastics Ltd.

Ultra Preset Inserts

Ultra Preset Inserts have been manufactured in Canada since 1987. Thirty million have been produced to date without a faulty piece being reported. They have been sold and used throughout Canada, the United States, and Mexico.

Due to their conductive nature for seismic activity Microsoft built all their high rise buildings in Seattle with the Ultra Preset Inserts. The Ultra Preset Inserts are nailed to the forms prior to concrete being poured. No drilling or holes are ever made in the concrete to install them which otherwise could alter the integrity and strength of that concrete.

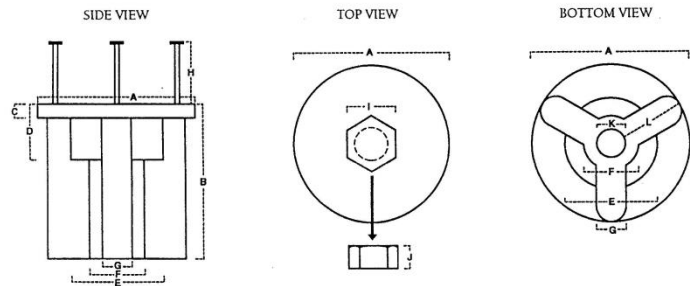
Ultra Preset Inserts are the strongest, fastest, most economical anchors on the market today.

They are suitable for use in seismic zones.

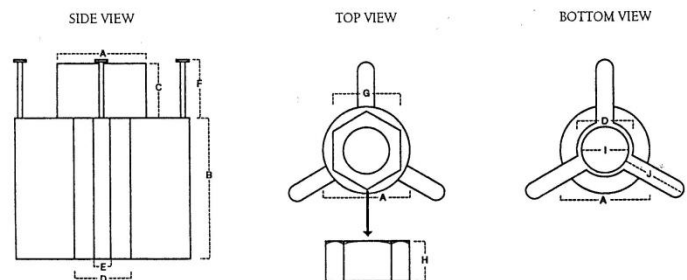


Product #	Size	#pkg	Lab pull test	Material		Weight-100pcs
				Body	Nut	
UPI-14	1/4"	500	2800 lbs.*	High impact HDPE	Grade 5	8lbs/3.6kg
UPI-38	3/8"	500	4300lbs.*	High impact HDPE	Grade 5	9lbs/4kg
UPI-12	1/2"	250	4800lbs.*	High impact HDPE	Grade 5	16lbs/7.3kg
UPI-58	5/8"	100	9950lbs.*	High impact HDPE	Grade 5	24lbs/11kg
UPI-34	3/4"	100	75600lbs.*	High impact HDPE	Grade 5	35lbs/16kg

*Lab testing done by Hardy BBT/Amec Foster Wheeler



measurements according to letter	A	B	C	D	E	F	G	H	I	J	K	L
1/4" PRESET INSERT	1.58"	1.55"	.136"	.562"	.922"	.551"	.300"	2.5" box nail	5" heavy hexnuts with across flats	.234"	.288"	.643"
3/8" PRESET INSERT	1.58"	1.55"	.136"	.562"	.922"	.551"	.300"	2.5" box nail	.687" heavy hexnuts with across flats	.359"	.288"	.643"
1/2" PRESET INSERT	1.85"	2.04"	.136"	.697"	1.12"	.717"	.300"	3.0" box nail	.875" heavy hexnuts with across flats	.484"	.536"	.637"



measurements according to letter	A	B	C	D	E	F	G	H	I	J
5/8" PRESET INSERT	1.37"	2.19"	.843"	.866"	.260"	3.0" box nail	1.06" heavy hexnuts with across flats	.609"	.723"	1.03"
3/4" PRESET INSERT	1.61"	2.19"	.943"	.982"	.260"	3.0" box nail	1.25" heavy hexnuts with across flats	.734"	.854"	1.07"